



Durecon Metal Shelving



PALMIERI combines leading edge technology, attention to detail and premium quality materials to deliver a diverse range of shelving systems to enhance any library environment.



How to Order:

Begin with a **Starter Unit** and order **Adder Units** of the same height, depth, and width for additional bays in any shelving run. One Mid Panel is included with every Adder unit. The End Panel from the Starter unit will go at the end of the shelving run. *See image above.

Single Face vs. Double Face units:

Single face units must rest against a wall and/or be anchored to the floor or ceiling.
Double face units may be freestanding and can go in the center of a room.

Wood Case Specification:

Premium veneer core is faced with grade "A" hardwood veneer that is both selected and laid-up by hand to ensure a consistent, quality facade.

End, mid, top and bottom panels are 1" thick, 1 1-ply solid veneer core.

End and mid panels are drilled with two vertical rows of holes for shelf adjustment on 1 1/4" (32mm) centers; 3/16" diameter pin holes are 3/4" deep

Base front of bottom panel is 4" high x 3/4" thick 9-ply solid veneer core, routed at each end to receive two 3 3/4" wide x 3/4" thick cleats along the depth of the panel (a third cleat at the base back buttresses the parallel cleats for added support).

Standard 1/4" matching printed back.



Shelving HEIGHTS:

30" (Window Shelving) 36" 42" 48" 60" 72" 82" 96"
Magazine Shelving units have a maximum height of 72"

Shelving WIDTHS:

25 1/4" 31 1/4" 37 1/4"

Shelving DEPTHS:

Single Face: 10 1/8" 12 1/8" **Double Face:** 19 1/2" 23 1/2"
Magazine Shelving units have a depth of 12 1/8" and 23 1/2" only

**Double Face shelving units without a Back require a Sway Brace for additional support and stability.



Standard Flat Shelving



Low Back Shelving**

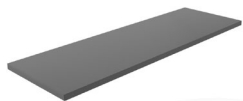


Magazine Shelving

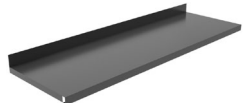


Slotted Shelf with Back

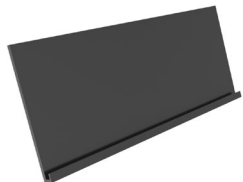
Standard Shelf Options:



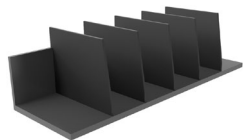
Flat Metal Shelves - flanges on all four sides; front and rear flanges are turned up and in (forming a triple bend) for additional support



Low Back Metal Shelves - flanges on three sides; front flange is turned up and in (forming a triple bend) for additional support. Back is bent 90 degrees to form a 1 1/4" high book stop back



Metal Magazine Shelves - 1" high x 1" deep lip along the front edge to secure magazines. Shelves are mounted using standard retractable magazine shelf hardware



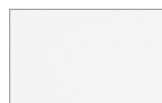
Picture Book Shelves - 5 routed slots, evenly spaced 5 5/8" apart, to accommodate 1/4" thick black masonite dividers.



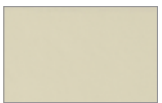
Slotted Shelves - 3 adjustable dividers each 5" high, which can be adjusted in increments of 2".

***Metal Shelves** can accommodate weight loads of **50 lbs./sq.ft.** without deflection in excess of 3/16".

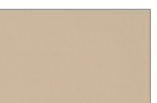
Standard Color Options for METAL Shelves



White



Antique White



Beige



Ruby



Green



Teal



Blue



Navy



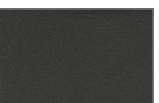
Grey



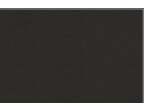
Sparkle Silver



Charcoal



Black Sandtex



Black



Slotted Shelf without Back**



Sliding Glass Doors



Wood/Glass Doors



Wood Hinged Doors

CHARACTERISTICS OF CORE MATERIAL PERFORMANCE:

Panel Core Type	Flatness	Visual Edge Quality	Surface Uniformity	Dimensional Stability	Screw-holding	Bending Strength
Inustrial Particleboard (Medium)	Excellent	Good	Excellent	Fair	Fair	Good
Medium Density Fiberboard (MDF)	Excellent	Excellent	Excellent	Fair	Good	Good
Veneer	Fair	Good	Fair	Excellent	Excellent	Excellent
Lumber	Good	Good	Good	Good	Excellent	Excellent
Combination Core with composite crossbands	Excellent	Good	Excellent	Good	Excellent	Excellent
Combination Core with composite inner ply	Good	Fair	Good	Good	Good	Good
Moisture Resistant Partcleboard	Excellent	Good	Good	Fair	Fair	Good
Moisture Resistant MDF	Excellent	Excellent	Excellent	Fair	Good	Good
Fire Rated Particleboard	Excellent	Fair	Good	Fair	Fair	Good

*The above chart produced by the Architectural Woodwork Institute, illustrates the several manufacturing options available within the shelving industry and demonstrates how PALMIERI selects only the best shelving methods available.

Additional Options:



Metal Grooved Shelf



Veneer Back



Cork Back



Slatwall Back



Laminate Top



Laminate Sloped Top (Single Face)



Laminate Sloped Top (Double Face)



Mobile Shelving



PALMIERI’s Durecon Metal Shelving collection assures excellence in both design and practical function. Join some of the most esteemed learning institutions and libraries, across North America, in making PALMIERI the choice for all your shelving needs.

PALMIER

1230 Reid Street
Richmond Hill
Ontario, Canada
L4B 1C4

T 905 731 9300
F 905 731 9878
TF 800 413 4440

info@palmierifurniture.com
www.PalmieriFurniture.com